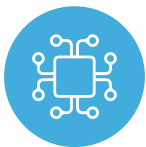


STARPOD

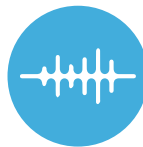
Program Your Transceivers

Patent No: **US 9,959,110 B2** **AU 2014395561**
SG 11201604256V **CN ZL201480074114.9**

Starview Programmable Optical Device (STARPOD) is designed to allow the user to re-program Starview transceiver modules (typically SFP/SFP+ and QSFP+/QSFP28/QSFP56) in the field. The STARPOD is also capable to tune the DWDM wavelengths of the DWDM tunable SFP+ module. This flexibility to re-program the transceiver module allows the user to connect the module to interwork with multiple leading vendors. The user will save time and money to support the wide varieties of networking equipment today.



Reprogramming Starview
Transceivers



DWDM Wavelength Tuning



Remote Diagnostic

Why STARPOD?

- 1 User friendly interface**
Easy to use menu with click and select interface
- 2 Fast and Efficient**
Immediate use of Starview transceiver to work on device after reprogramming
- 3 Cost Saving**
Saves on CAPEX and OPEX with one common type of transceiver

